

**Legend**

- ▲ 2018\_Municipality\_Over\_5K
- ▲ 2018\_Municipality\_Under\_5K
- DIV13\_Routes
- Div\_13\_County\_Boundaries

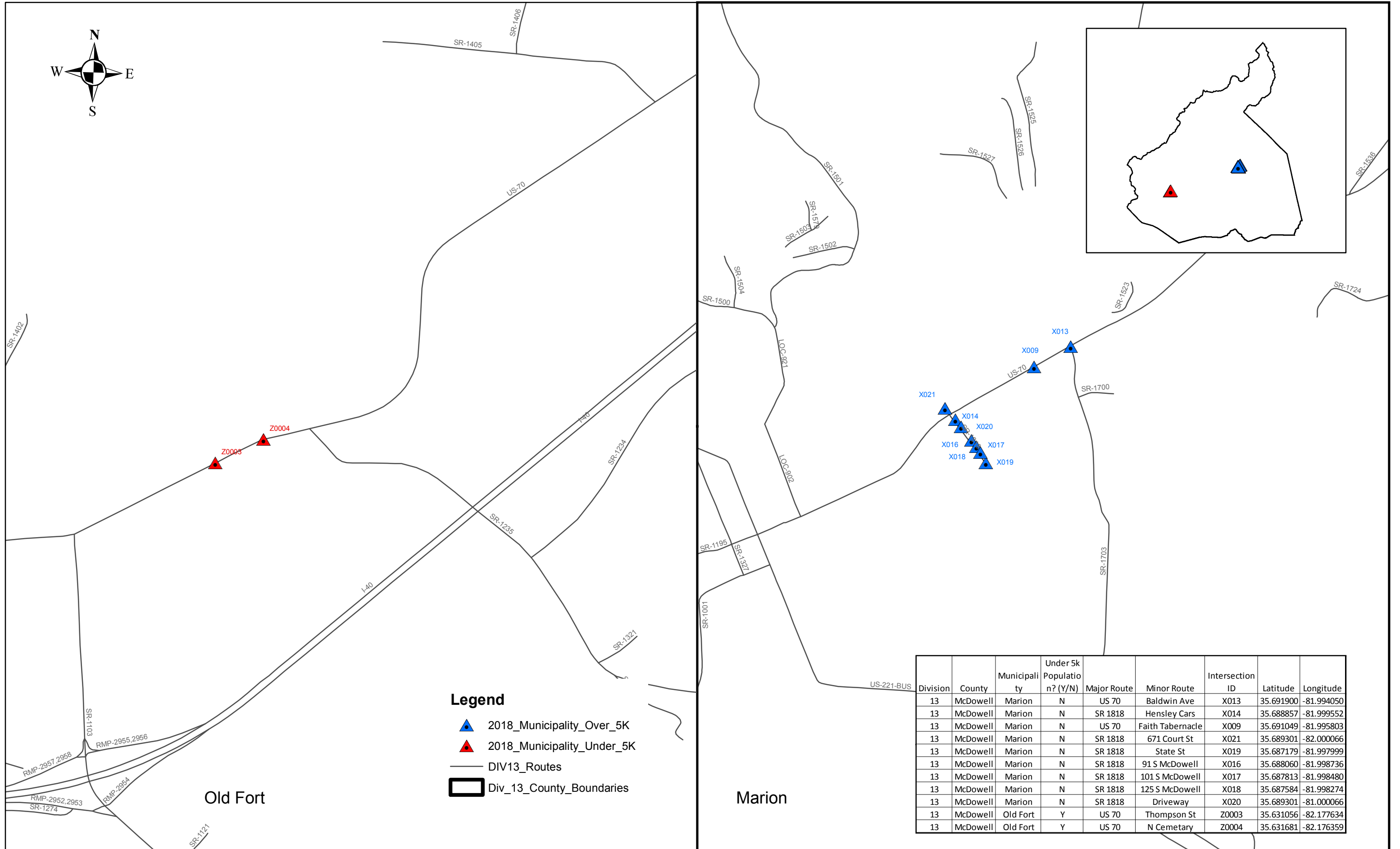
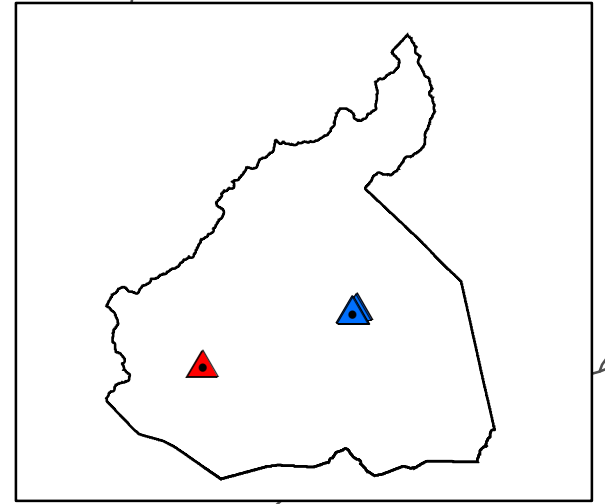
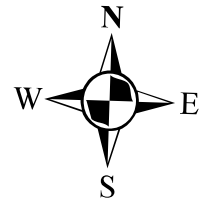
Division	County	Municipality	Under 5k Population ? (Y/N)	Major Route	Minor Route	Intersection ID	Latitude	Longitude
13	Burke	Morganton	N	NC 181	K-Mart	U005	35.75278	-81.713842
13	Burke	Morganton	N	Lowes Ent	US 64	V001	35.71664	-81.695879
13	Burke	Morganton	N	NC 181	US 64	U009	35.749543	-81.704376
13	Burke	Morganton	N	US 70 Bypass	220 Autozone	Y027	35.7361	-81.6812
13	Burke	Morganton	N	US 64 W Bypass	Left behind building	V032		
13	Burke	Morganton	N	NC 18	Sloan/ Moose St	U052	35.728299	-81.666397
13	Burke	Morganton	N	US 70 Bus	College St	Y031	35.7381	-81.6787
13	Burke	Morganton	N	NC 18 S	612 NC 185	U033	35.740654	-81.68154
13	Burke	Morganton	N	NC 18	Rockett St	U053	35.727803	-81.665508
13	Burke	Morganton	N	US 64 Bus	Lee St	V020	35.758427	-81.688279
13	Burke	Morganton	N	US 70 E	Hesheys BBQ	V037	35.735935	-81.722624
13	Burke	Morganton	N	NC 18	E Concord St	U065	35.744601	-81.6853
13	Burke	Morganton	N	NC 18	US 64 Bus/NC 18	U068	0.3574714	-81.688557
13	Burke	Morganton	N	NC 18	McDowell St	U064	35.74384	-81.684028
13	Burke	Morganton	N	SR 1419	SR 1421	U001	35.765922	-81.715193
13	Burke	Morganton	N	SR 1704	100' W of Eastview	W126	35.7354	-81.6743
13	Burke	Morganton	N	Meeting Pl	US 70 Bus E	Y023	35.751	-81.6793
13	Burke	Morganton	N	NC 181	Car Wash	U010	35.749365	-81.703825
13	Burke	Morganton	N	NC 181	Private Ent	U011	35.749331	-81.703373
13	Burke	Morganton	N	NC 181	Driveway	U015	35.749264	-81.702864
13	Burke	Morganton	N	NC 181	fishhouse	U021	35.748983	-81.699473
13	Burke	Morganton	N	SR 1704	223 Bethel Rd	W120	36.7386	-81.6693
13	Burke	Morganton	N	SR 1704	221/222 Bethel Rd	W121	35.7386	-81.6684
13	Burke	Morganton	N	US 70 B	#810	Y007	35.7552	-81.6779
13	Burke	Morganton	N	US 70 B	#805,801	Y008	35.7552	-81.6779
13	Burke	Morganton	N	US 70 Bus	Burke Mission Station	Y032	35.7421	-81.6897
13	Burke	Morganton	N	US 70 Bus	#305	Y033	35.7423	-81.6898
13	Burke	Morganton	N	US 70 Bus	#820	Y046	35.7552	-81.6779
13	Burke	Morganton	N	NC 18/S Sterling St	Security Pl/Village Ck	U049	35.731492	-81.671476
13	Burke	Drexel	Y	NC 114	206 N Main	W099	35.759554	-81.604039
13	Burke	Drexel	Y	SR 1535	Church Parking	W103	35.758797	-81.601526
13	Burke	Drexel	Y	SR 1535	300 Oakland Dr	W106	35.759242	-81.60069
13	Burke	Drexel	Y	SR 1535	302 Oakland Dr	W107	35.759348	-81.600528
13	Burke	Drexel	Y	SR 1535	306 Oakland Dr	W109	35.759695	-81.599921
13	Burke	Drexel	Y	SR 1535	310 Oakland Dr	W110	35.7599	-81.599543
13	Burke	Drexel	Y	SR 1535	314 Oakland Dr	W111	35.760242	-81.598968
13	Burke	Drexel	Y	SR 1535	402 Oakland Dr	W113	35.760501	-81.598307
13	Burke	Glen Alpine	Y	US 70	SR 1299	T002	35.726758	-81.782453
13	Burke	Glen Alpine	Y	US 70	Cuthbertson	T007	35.727306	-81.781619
13	Burke	Glen Alpine	Y	US 70	405 East Main	T012	35.727782	-81.771998
13	Burke	Hildebran	Y	SR 1773	SR 1002	W009	35.706993	-81.422988
13	Burke	Valdese	Y	300 Church St	SR 1538	W032	35.746469	-81.568709
13	Burke	Valdese	Y	Old Valdese Elem Ent	SR 1538	W034	35.746654	-81.568519
13	Burke	Valdese	Y	Valdese Funeral	SR 1744	W042	35.741798	-81.554621

TIP #: R-5793EA  
WBS #: 44923.3.10

Division	County	Municipality	Under 5k Population? (Y/N)	Major Route	Minor Route	Intersection ID	Latitude	Longitude	Asphalt Plant Mix, Pavement Repair (TONS)	2'-6" Concrete C&G (LF)	4" Concrete Sidewalk (SY)	Concrete Curb Ramp (EA)	6" Concrete Driveway (SY)	Notes
13	Burke	Drexel	Y	NC 114	206 N Main	W099	35.759554	-81.604039	2			2		
13	Burke	Drexel	Y	SR 1535	Church Parking	W103	35.758797	-81.601526	1		10		20	
13	Burke	Drexel	Y	SR 1535	300 Oakland Dr	W106	35.759242	-81.600690			10		25	
13	Burke	Drexel	Y	SR 1535	302 Oakland Dr	W107	35.759348	-81.600528			10		15	
13	Burke	Drexel	Y	SR 1535	306 Oakland Dr	W109	35.759695	-81.599921			25			
13	Burke	Drexel	Y	SR 1535	310 Oakland Dr	W110	35.759900	-81.599543	2				28	
13	Burke	Drexel	Y	SR 1535	314 Oakland Dr	W111	35.760242	-81.598968	2				30	
13	Burke	Drexel	Y	SR 1535	402 Oakland Dr	W113	35.760501	-81.598307					30	
13	Burke	Glen Alpine	Y	US 70	SR 1299	T002	35.726758	-81.782453	1	8	20	2		
13	Burke	Glen Alpine	Y	US 70	Cuthbertson	T007	35.727306	-81.781619	2	6	20	2		
13	Burke	Glen Alpine	Y	US 70	405 East Main	T012	35.727782	-81.771998	1		15	1		
13	Burke	Hildebran	Y	SR 1773	SR 1002	W009	35.706993	-81.422988	2		15	2		
13	Burke	Valdese	Y	300 Church St	SR 1538	W032	35.746469	-81.568709			25		20	
13	Burke	Valdese	Y	Old Valdese Elem Ent	SR 1538	W034	35.746654	-81.568519				1		
13	Burke	Valdese	Y	Valedese Elem Exit	SR 1538	W035	35.746895	-81.568527	2			2		no walks
13	Burke	Valdese	Y	Valdese Funeral	SR 1744	W042	35.741798	-81.554621	1				22	
<b>TOTALS</b>									<b>16</b>	<b>14</b>	<b>150</b>	<b>12</b>	<b>190</b>	

TIP #: R-5793EB  
WBS #: 44923.3.11

Division	County	Municipality	Under 5k Population? (Y/N)	Major Route	Minor Route	Intersection ID	Latitude	Longitude	Asphalt Plant Mix, Pavement Repair (TONS)	2'-6" Concrete C&G (LF)	4" Concrete Sidewalk (SY)	Concrete Curb Ramp (EA)	6" Concrete Driveway (SY)	Notes
13	Burke	Morganton	N	Lowes Ent	US 64	V001	35.716640	-81.695879	1	12	6	2		
13	Burke	Morganton	N	NC 181	US 64	U009	35.749543	-81.704376	1	8	12	2		
13	Burke	Morganton	N	US 70 Bypass	220 Autozone	Y027	35.736100	-81.681200	1			4		
13	Burke	Morganton	N	US 64 W Bypass	Left behind building	V032						2	30	
13	Burke	Morganton	N	NC 18	Sloan/ Moose St	U052	35.728299	-81.666397	2			8		
13	Burke	Morganton	N	US 70 Bus	College St	Y031	35.738100	-81.678700	1	12		3		
13	Burke	Morganton	N	NC 18 S	612 NC 185	U033	35.740654	-81.681540	1	15		2	15	
13	Burke	Morganton	N	NC 18	Rockett St	U053	35.727803	-81.665508	1	15		6		
13	Burke	Morganton	N	US 64 Bus	Lee St	V020	35.758427	-81.688279				2		
13	Burke	Morganton	N	US 70 E	Hesheys BBQ	V037	35.735935	-81.722624		12	15		25	
13	Burke	Morganton	N	NC 18	E Concord St	U065	35.744601	-81.685300	1			8		
13	Burke	Morganton	N	NC 18	US 64 Bus/NC 18	U068	35.747139	-81.688557	1	12	15	8		
13	Burke	Morganton	N	NC 181	K-Mart	U005	35.752780	-81.713842	2	12	12	2		12" RCMP add 1 section
13	Burke	Morganton	N	NC 18	McDowell St	U064	35.743840	-81.684028	2	12	5	8		
13	Burke	Morganton	N	SR 1419	SR 1421	U001	35.765922	-81.715193	1	4	6	1		
13	Burke	Morganton	N	SR 1704	100' W of Eastview	W126	35.735400	-81.674300	1		15		25	
13	Burke	Morganton	N	Meeting Pl	US 70 Bus E	Y023	35.751000	-81.679300				1		
13	Burke	Morganton	N	NC 181	Car Wash	U010	35.749365	-81.703825	2	12	6		50	
13	Burke	Morganton	N	NC 181	Private Ent	U011	35.749331	-81.703373	4	12	12		85	
13	Burke	Morganton	N	NC 181	Driveway	U015	35.749264	-81.702864	1		15		25	
13	Burke	Morganton	N	NC 181	fishhouse	U021	35.748983	-81.699473	1	15	10	2		
13	Burke	Morganton	N	SR 1704	223 Bethel Rd	W120	36.738600	-81.669300	2	6			30	
13	Burke	Morganton	N	SR 1704	221/222 Bethel Rd	W121	35.738600	-81.668400	2	25	15		20	
13	Burke	Morganton	N	US 70 B	#810	Y007	35.755200	-81.677900			20	2		
13	Burke	Morganton	N	US 70 B	#805,801	Y008	35.755200	-81.677900				2		
13	Burke	Morganton	N	US 70 Bus	Burke Misson Station	Y032	35.742100	-81.689700	3		10		35	
13	Burke	Morganton	N	US 70 Bus	#305	Y033	35.742300	-81.689800	3		10		35	
13	Burke	Morganton	N	US 70 Bus	#820	Y046	35.755200	-81.677900				2		
13	Burke	Morganton	N	NC 18/S Sterling St	Security Pl/Village Ck	U049	35.731492	-81.671476	3	15	10	8		
<b>TOTALS</b>									<b>37</b>	<b>199</b>	<b>194</b>	<b>75</b>	<b>375</b>	



- Legend**
- ▲ 2018\_Municipality\_Over\_5K
  - ▲ 2018\_Municipality\_Under\_5K
  - DIV13\_Routes
  - Div\_13\_County\_Boundaries

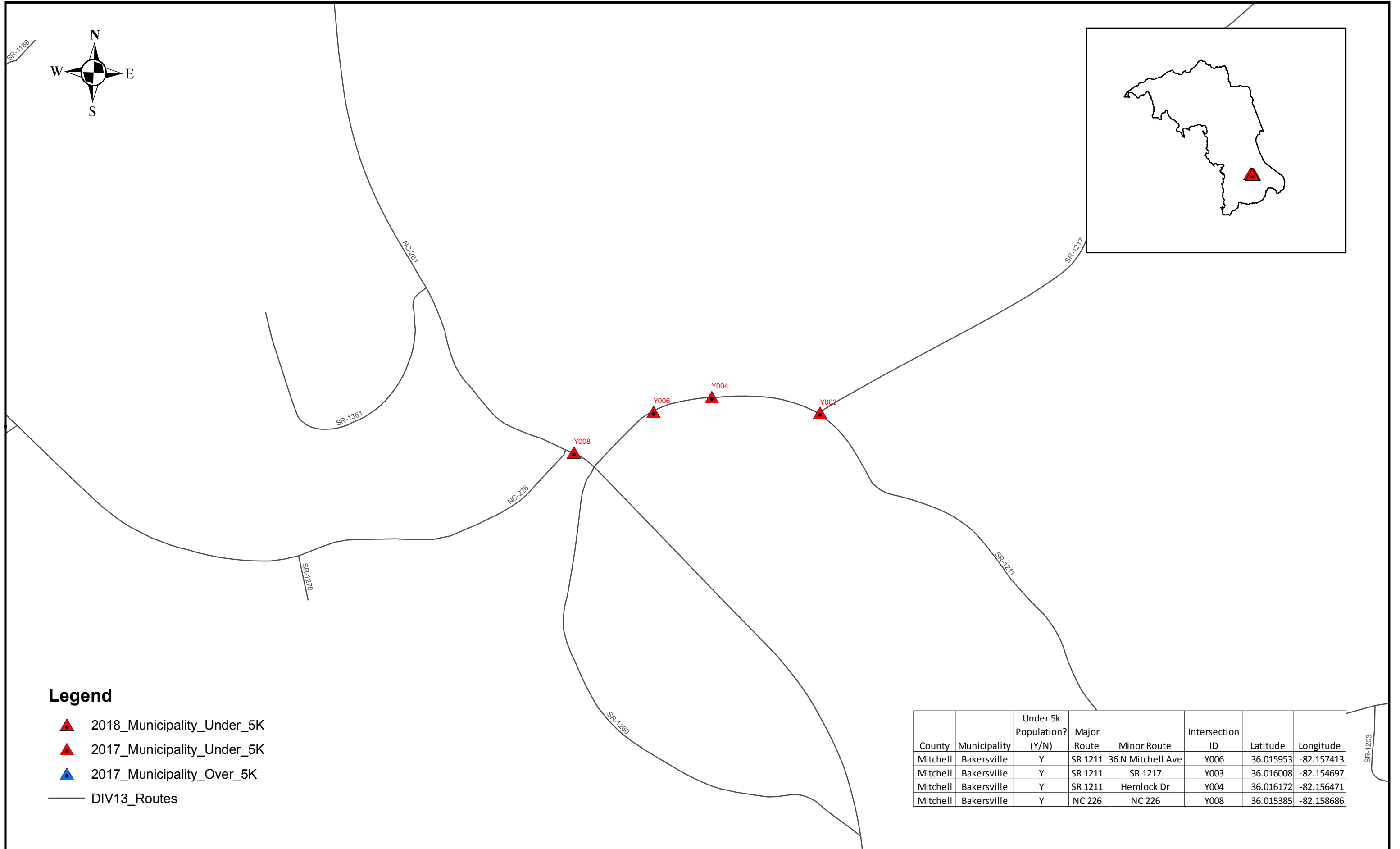
Division	County	Municipality	Under 5k Population? (Y/N)	Major Route	Minor Route	Intersection ID	Latitude	Longitude
13	McDowell	Marion	N	US 70	Baldwin Ave	X013	35.691900	-81.994050
13	McDowell	Marion	N	SR 1818	Hensley Cars	X014	35.688857	-81.999552
13	McDowell	Marion	N	US 70	Faith Tabernacle	X009	35.691049	-81.995803
13	McDowell	Marion	N	SR 1818	671 Court St	X021	35.689301	-82.000066
13	McDowell	Marion	N	SR 1818	State St	X019	35.687179	-81.997999
13	McDowell	Marion	N	SR 1818	91 S McDowell	X016	35.688060	-81.998736
13	McDowell	Marion	N	SR 1818	101 S McDowell	X017	35.687813	-81.998480
13	McDowell	Marion	N	SR 1818	125 S McDowell	X018	35.687584	-81.998274
13	McDowell	Marion	N	SR 1818	Driveway	X020	35.689301	-81.000066
13	McDowell	Old Fort	Y	US 70	Thompson St	Z0003	35.631056	-82.177634
13	McDowell	Old Fort	Y	US 70	N Cemetary	Z0004	35.631681	-82.176359

TIP #: R-5793EA  
WBS #: 44923.3.10

Division	County	Municipality	Under 5k Population? (Y/N)	Major Route	Minor Route	Intersection ID	Latitude	Longitude	Asphalt Plant Mix, Pavement Repair (TONS)	2'-6" Concrete C&G (LF)	4" Concrete Sidewalk (SY)	Concrete Curb Ramp (EA)	6" Concrete Driveway (SY)	Notes
13	McDowell	Old Fort	Y	US 70	Thompson St	Z0003	35.631056	-82.177634	1		6	2		
13	McDowell	Old Fort	Y	US 70	N Cemetary	Z0004	35.631681	-82.176359	1		6	2		
<b>TOTALS</b>									<b>2</b>	<b>0</b>	<b>12</b>	<b>4</b>	<b>0</b>	

TIP #: R-5793EB  
WBS #: 44923.3.11

Division	County	Municipality	Under 5k Population? (Y/N)	Major Route	Minor Route	Intersection ID	Latitude	Longitude	Asphalt Plant Mix, Pavement Repair (TONS)	2'-6" Concrete C&G (LF)	4" Concrete Sidewalk (SY)	Concrete Curb Ramp (EA)	6" Concrete Driveway (SY)	Notes
13	McDowell	Marion	N	US 70	Baldwin Ave	X013	35.691900	-81.994050	2	24	33	6		
13	McDowell	Marion	N	SR 1818	Hensley Cars	X014	35.688857	-81.999552	2		6		50	
13	McDowell	Marion	N	US 70	Faith Tabernacle	X009	35.691049	-81.995803			10		50	
13	McDowell	Marion	N	SR 1818	671 Court St	X021	35.689301	-82.000066	1				45	
13	McDowell	Marion	N	SR 1818	State St	X019	35.687179	-81.997999	3	15	6	4		
13	McDowell	Marion	N	SR 1818	91 S McDowell	X016	35.688060	-81.998736	1				25	
13	McDowell	Marion	N	SR 1818	101 S McDowell	X017	35.687813	-81.998480	1				25	
13	McDowell	Marion	N	SR 1818	125 S McDowell	X018	35.687584	-81.998274	1	20	14	2		
13	McDowell	Marion	N	SR 1818	Driveway	X020	35.689301	-81.000066	1				45	
<b>TOTALS</b>									<b>12</b>	<b>59</b>	<b>69</b>	<b>12</b>	<b>240</b>	



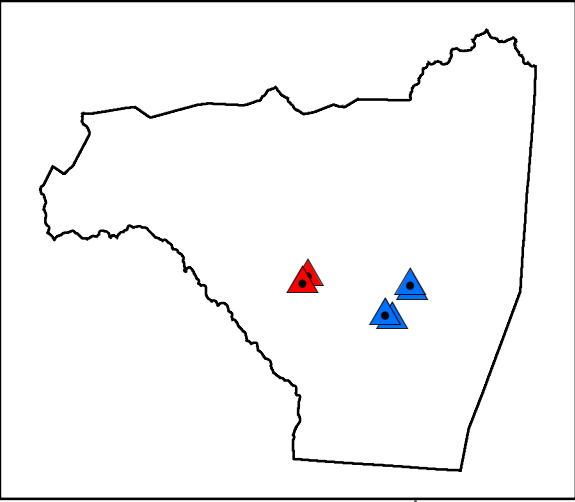
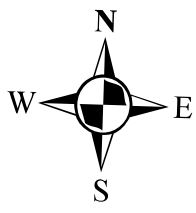
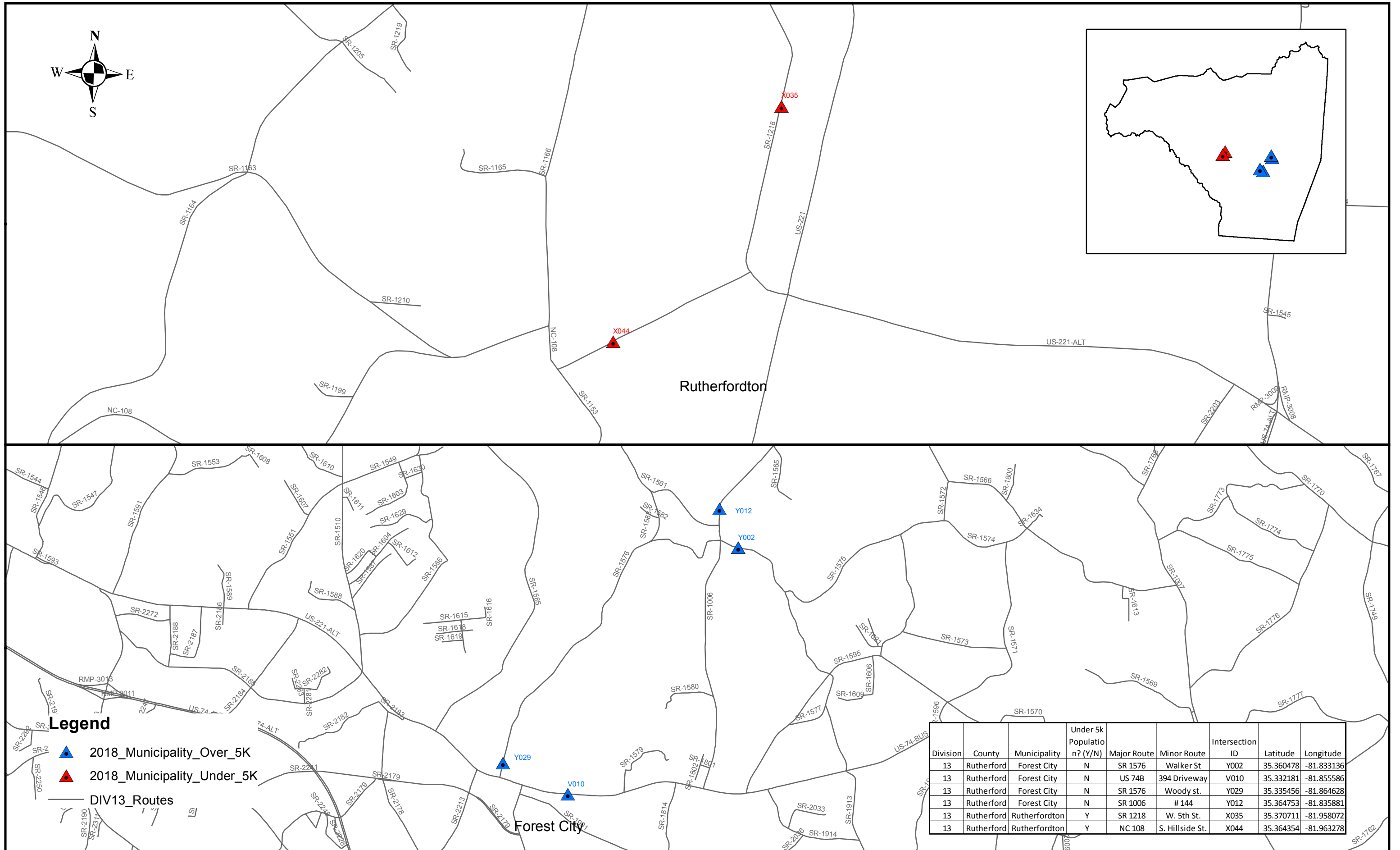
**Legend**

- ▲ 2018\_Municipality\_Under\_5K
- ▲ 2017\_Municipality\_Under\_5K
- ▲ 2017\_Municipality\_Over\_5K
- DIV13\_Routes

County	Municipality	Under 5k Population? (Y/N)	Major Route	Minor Route	Intersection ID	Latitude	Longitude
Mitchell	Bakersville	Y	SR 1211	36 N Mitchell Ave	Y006	36.015953	-82.157413
Mitchell	Bakersville	Y	SR 1211	SR 1217	Y003	36.016008	-82.154697
Mitchell	Bakersville	Y	SR 1211	Hemlock Dr	Y004	36.016172	-82.156471
Mitchell	Bakersville	Y	NC 226	NC 226	Y008	36.015385	-82.158686

TIP #: R-5793EA  
 WBS #: 44923.3.10

Division	County	Municipality	Under 5k Population? (Y/N)	Major Route	Minor Route	Intersection ID	Latitude	Longitude	Asphalt Plant Mix, Pavement Repair (TONS)	2'-6" Concrete C&G (LF)	4" Concrete Sidewalk (SY)	Concrete Curb Ramp (EA)	6" Concrete Driveway (SY)	Notes
13	Mitchell	Bakersville	Y	SR 1211	SR 1217	Y003	36.016008	-82.154697	1		56	1		
13	Mitchell	Bakersville	Y	SR 1211	Hemlock Dr	Y004	36.016172	-82.156471	1		10	2		
13	Mitchell	Bakersville	Y	SR 1211	36 N Mitchell Ave	Y006	36.015953	-82.157413	1		20	3		step
13	Mitchell	Bakersville	Y	NC 226	NC 226	Y008	36.015385	-82.158686	2		25	2		
<b>TOTALS</b>									<b>5</b>	<b>0</b>	<b>111</b>	<b>8</b>	<b>0</b>	



Rutherfordton

Forest City

**Legend**

▲ 2018\_Municipality\_Over\_5K

▲ 2018\_Municipality\_Under\_5K

— DIV13\_Routes

Division	County	Municipality	Under 5k Population? (Y/N)	Major Route	Minor Route	Intersection ID	Latitude	Longitude
13	Rutherford	Forest City	N	SR 1576	Walker St	Y002	35.360478	-81.833136
13	Rutherford	Forest City	N	US 74B	394 Driveway	V010	35.332181	-81.855586
13	Rutherford	Forest City	N	SR 1576	Woody st.	Y029	35.335456	-81.864628
13	Rutherford	Forest City	N	SR 1006	# 144	Y012	35.364753	-81.835881
13	Rutherford	Rutherfordton	Y	SR 1218	W. 5th St.	X035	35.370711	-81.958072
13	Rutherford	Rutherfordton	Y	NC 108	S. Hillside St.	X044	35.364354	-81.963278



TIP #: R-5793EA  
WBS #: 44923.3.10

Division	County	Municipality	Under 5k Population? (Y/N)	Major Route	Minor Route	Intersection ID	Latitude	Longitude	Asphalt Plant Mix, Pavement Repair (TONS)	2'-6" Concrete C&G (LF)	4" Concrete Sidewalk (SY)	Concrete Curb Ramp (EA)	6" Concrete Driveway (SY)	Notes
13	Rutherford	Rutherfordton	Y	SR 1218	W. 5th St.	X035	35.370711	-81.958072	1	12	10	2		
13	Rutherford	Rutherfordton	Y	NC 108	S. Hillside St.	X044	35.364354	-81.963278	1			2		
<b>TOTALS</b>									<b>2</b>	<b>12</b>	<b>10</b>	<b>4</b>	<b>0</b>	

TIP #: R-5793EB  
WBS #: 44923.3.11

Division	County	Municipality	Under 5k Population? (Y/N)	Major Route	Minor Route	Intersection ID	Latitude	Longitude	Asphalt Plant Mix, Pavement Repair (TONS)	2'-6" Concrete C&G (LF)	4" Concrete Sidewalk (SY)	Concrete Curb Ramp (EA)	6" Concrete Driveway (SY)	Notes
13	Rutherford	Forest City	N	US 74B	394 Driveway	V010	35.332181	-81.855586	2	6	10		18	
13	Rutherford	Forest City	N	SR 1576	Walker St	Y002	35.360478	-81.833136		15		2		Bostic
13	Rutherford	Forest City	N	SR 1576	Woody st.	Y029	35.335456	-81.864628	1		10	2		
13	Rutherford	Forest City	N	SR 1006	# 144	Y012	35.364753	-81.835881	1		5	1		
<b>TOTALS</b>									<b>4</b>	<b>21</b>	<b>25</b>	<b>5</b>	<b>18</b>	